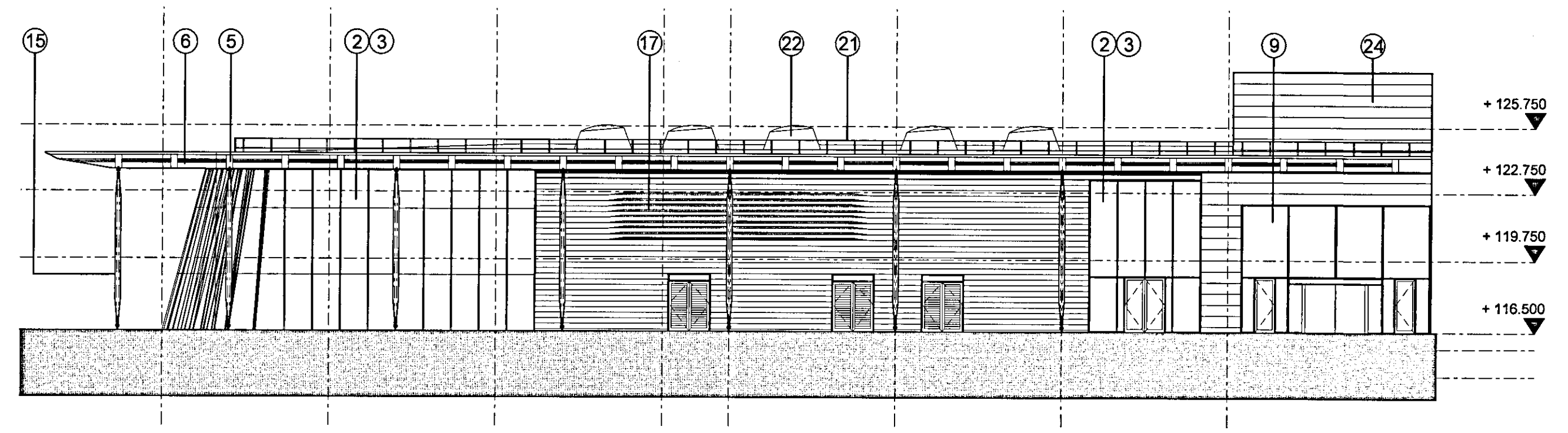
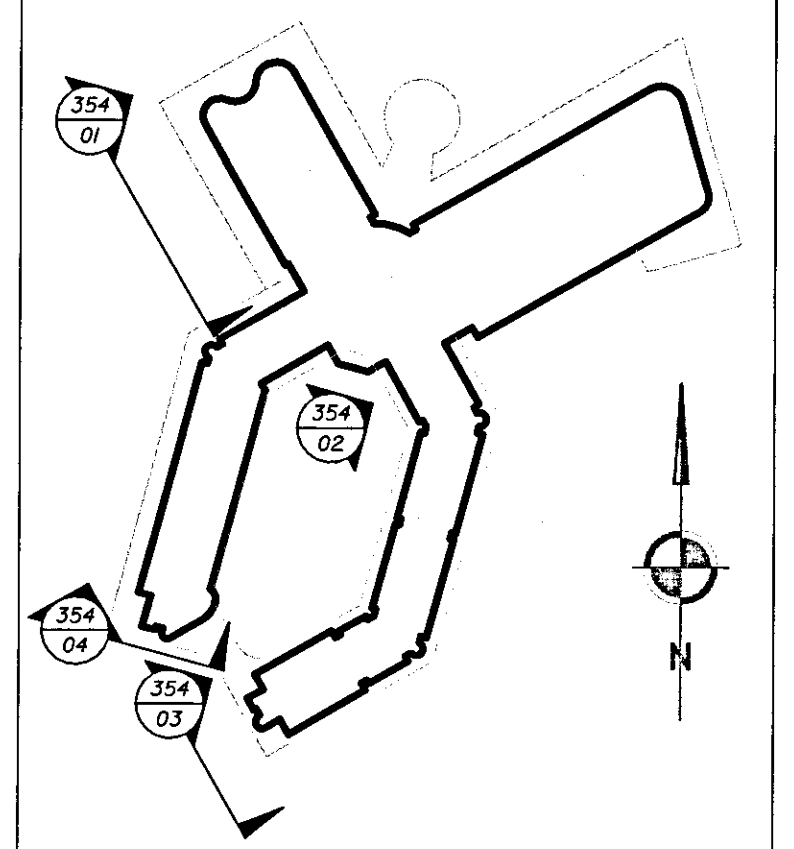


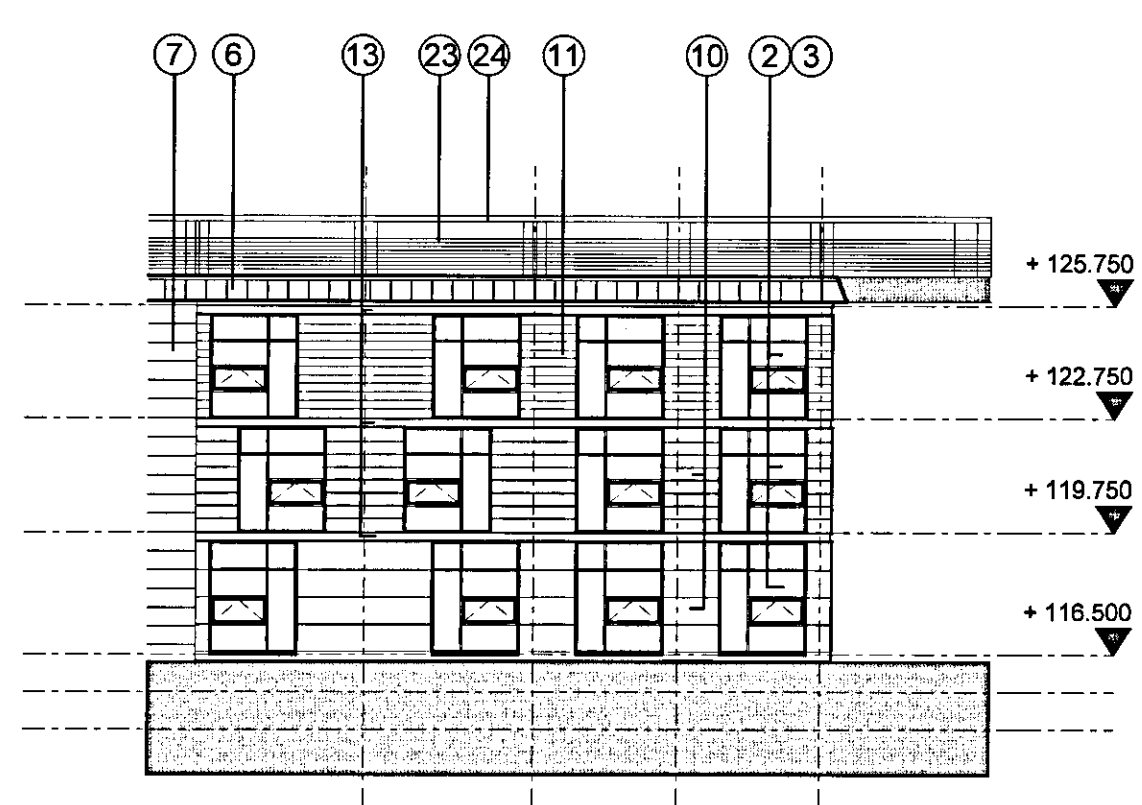
RECEIVED  
02 MAR 2010  
TIME: .....

NOTES  
1. To be read with CDM Risk Register  
2. Do not scale, check this is the latest version, if in doubt, ask see drawing issue log for issue history

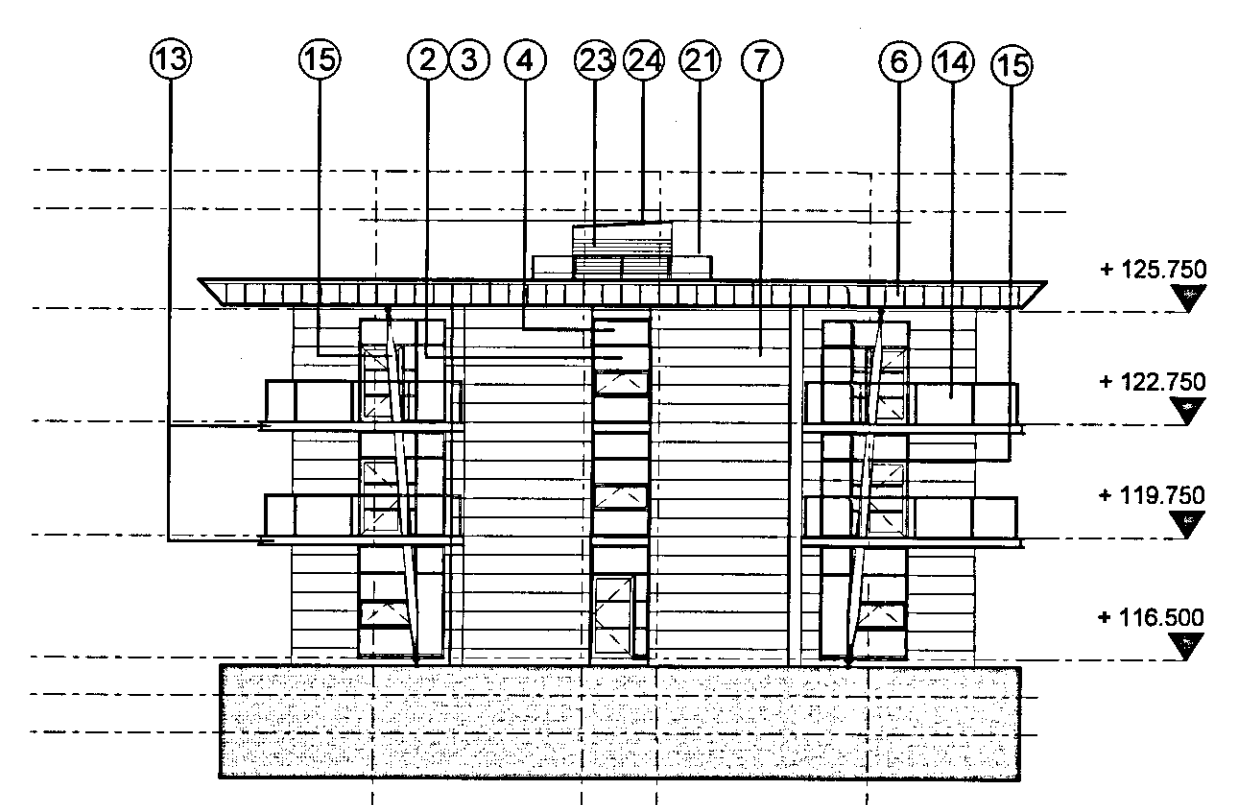
09003-354/05  
Hotel Elevation Location Plan  
Scale: NTS



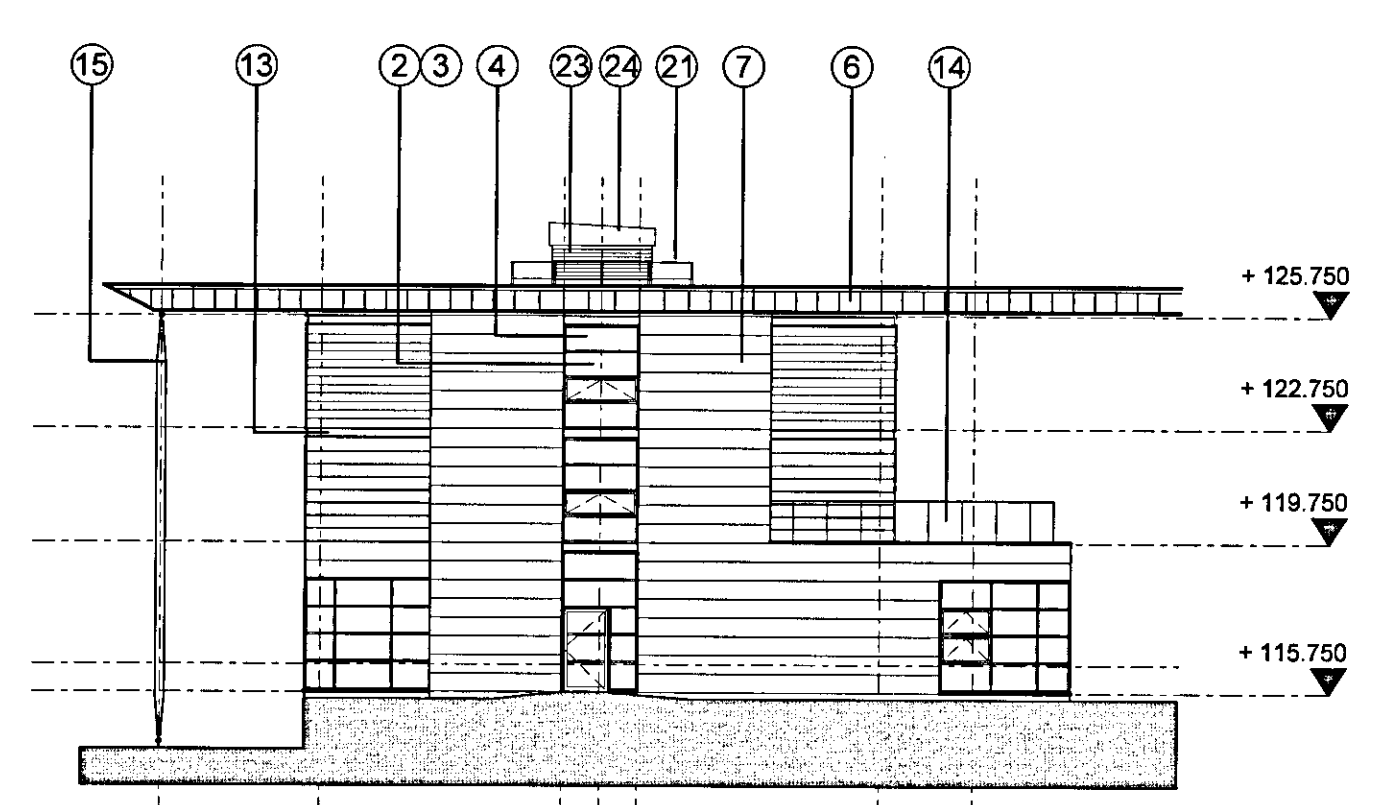
09003-354/01  
HOTEL BUILDING: PROPOSED SOUTH WEST ELEVATION: LEISURE WING  
SCALE 1:200



09003-354/02  
HOTEL BUILDING: PROPOSED SOUTH WEST ELEVATION TO COURTYARD  
SCALE 1:200



09003-354/03  
HOTEL BUILDING: PROPOSED SOUTH WEST ELEVATION FACING SPORTS BUILDINGS  
SCALE 1:200



09003-354/04  
HOTEL BUILDING: PROPOSED SOUTH WEST ELEVATION FACING SPORTS BUILDINGS  
SCALE 1:200

MATERIALS LEGEND

- ① Pre patinated copper cladding
- ② PPC curtain walling
- ③ Sealed double glazed units
- ④ Sealed double glazed insulated spandrel panels
- ⑤ Bronze anodised aluminium louvre blades
- ⑥ Pre weathered brass cassette panels to soffits and fascias
- ⑦ Pre weathered brass strip cladding
- ⑧ Pre weathered brass plank cladding
- ⑨ Structural glazing (double glazed)
- ⑩ Stone cladding
- ⑪ Oak strip boarding cladding
- ⑫ Oak solar shading fins
- ⑬ ppc channel
- ⑭ Laminated glass balustrade
- ⑮ Column column with engineered steel head and base connection details
- ⑯ Stainless steel bracing to porte cochere
- ⑰ Bronze screen to plant louvres
- ⑱ Roller shutter doors
- ⑲ ppc steel doorset
- ⑳ Standing seam metal deck roofing
- ㉑ Handrail: ppc 12 x50 flats
- ㉒ Prepatinated copper rooflight surround
- ㉓ ppc louvre
- ㉔ ppc rainscreen cassette cladding
- ㉕ Kalwall cladding panels in ppc support framework
- ㉖ Painted steel columns with engineered head and base details
- ㉗ Opaque double glazed units
- ㉘ Timber louvres
- ㉙ Tensile opaque fabric roof covering
- ㉚ Carbon walling
- ㉛ Dressed stone walling

P/10/00255

C. ISSUED FOR PLANNING	2010/02/22	MC	SG
B. ISSUED FOR PLANNING	2009/02/22	MC	SG
A. Draft Issue For Comments	2009/02/29	MC	SG
- First Issue	2009/12/22	BY	BF
Rev	Notes	Date	By

redboxarchitecture  
Red Box Architecture, St Nicholas Church, Newcastle upon Tyne, NE1 1RJ  
t: +44 (0)191 245 7105, f: +44 (0)191 245 7111, mail@redboxdesign.com, www.redboxdesign.com  
Red Box Design Group Ltd trading as Red Box Architecture  
redboxdesigngroup : redboxinteriors redboxgallery

THE NATIONAL FOOTBALL CENTRE  
ST GEORGE'S PARK

HOTEL BUILDING  
Proposed South West Elevations

1:200	09 003	354	C
A1	PLANNING		

copyright © Red Box Design Group Ltd 2010

RECEIVED  
02 MAR 2010  
TIME: .....